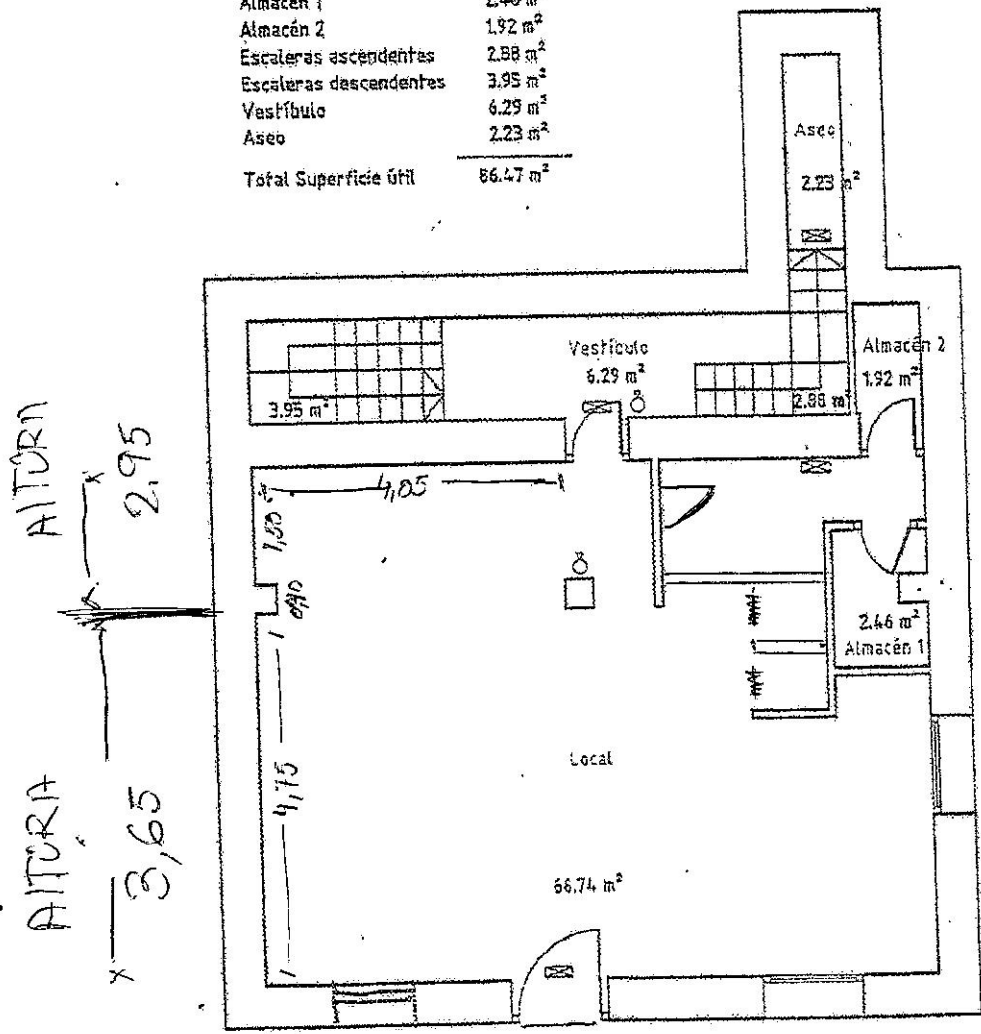




Local	66.74 m ²
Almacén 1	2.46 m ²
Almacén 2	1.92 m ²
Escaleras ascendentes	2.98 m ²
Escaleras descendentes	3.95 m ²
Vestíbulo	6.29 m ²
Aseo	2.23 m ²
Total Superficie útil	86.47 m²



 Luces de emergencia
 Extintor 21-A

E = 1 / 100